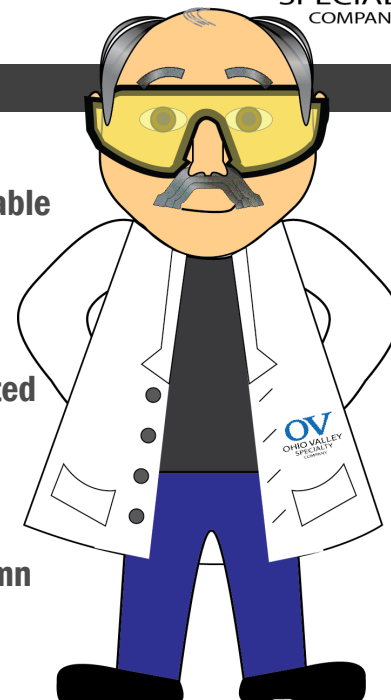


OV-SUPERWAX



Our new OV-SuperWax column is made from a cross linked polyethylene glycol (PEG) stationary phase with a higher, more stable temperature limit. This phase is bonded and produces a higher polarity column with extreme inertness.

The OV-SuperWax column is very rugged and can withstand repeated temperature cycling and still retain its low bleed performance.

OV-SuperWax is quickly becoming a favorite (PEG) column for chromatographers around the world. This phase produces a column to cover many applications in food, aromatics, and essential oils.

FEATURES

- High polarity
- Bonded and crosslinked
- Highest upper temperature limits of PEG phases
- Solvent rinsable
- Equivalent to USP G16

APPLICATIONS

- Alcohols
- Aromatics
- Essential Oils
- Free Acids
- Polar Solvents

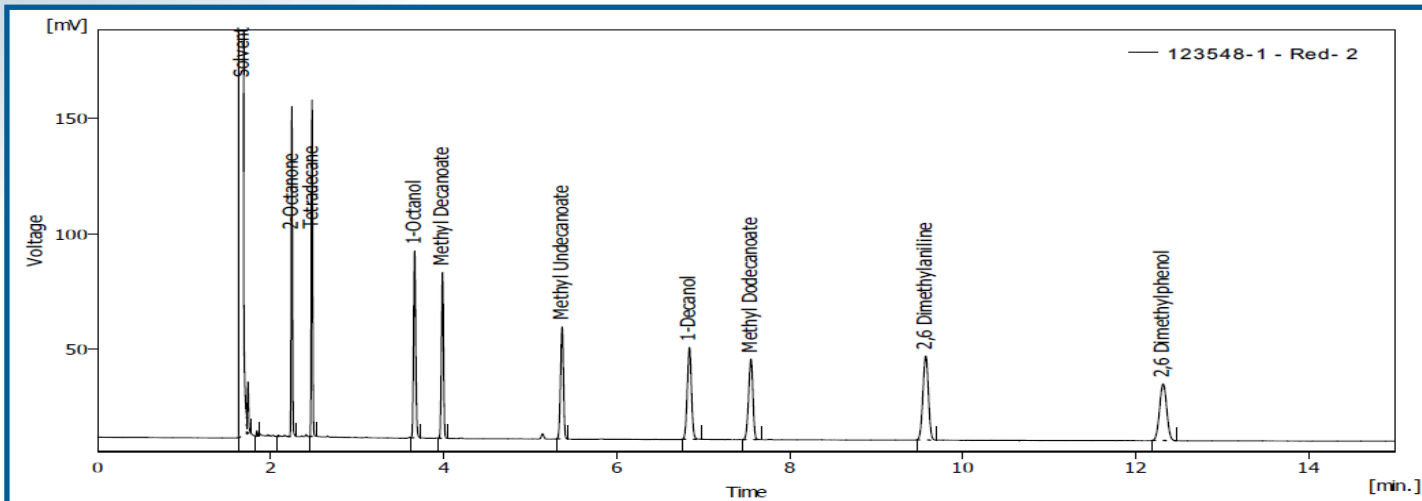
SIMILAR PHASES

- HP Innowax
- Stabilwax
- CP-Wax 52CB
- Supelcowax-10
- BP-20

ID	FILM MICRON	TEMPERATURE LIMIT CELCIUS	15 METER	30 METER	60 METER
0.25	0.1	40 to 260/280	915-2500	930-2500	960-2500
0.25	0.15	40 to 260/280	915-2501	930-2501	960-2501
0.25	0.25	40 to 260/280	915-2502	930-2502	960-2502
0.25	0.5	40 to 260/280	915-2503	930-2503	960-2503
0.25	1.0	40 to 260/280	915-2504	930-2504	960-2504
0.32	0.1	40 to 260/280	915-3200	930-3200	960-3200
0.32	0.15	40 to 260/280	915-3201	930-3201	960-3201
0.32	0.25	40 to 260/280	915-3202	930-3202	960-3202
0.32	0.5	40 to 260/280	915-3203	930-3203	960-3203
0.32	1.0	40 to 260/280	915-3204	930-3204	960-3204
0.53	0.25	40 to 260/280	915-5302	930-5302	960-5302
0.53	0.5	40 to 260/280	915-5303	930-5303	960-5303
0.53	1.0	40 to 260/280	915-5310	930-5310	960-5310

OV-SUPERWAX

Part Number		930-2502	
Serial Number:	123548	Column Temp Isothermal:	130°C
30M x 0.25mm x 0.25 uF	Liquid Phase: OV-SuperWax	Injector Temp: 250°C	FID Detector Temp: 300°C
Maximum Programmed Temp:	280°C	Carrier Gas:	Helium
Maximum Isothermal Temp:	260°C	Hold Up Time Compound:	Methane (1.6 min)



Part Number		930-5302	
Serial Number:	123581	Column Temp Isothermal:	100°C
30M x 0.53mm x 0.25 uF	Liquid Phase: OV-SuperWax	Injector Temp: 250°C	FID Detector Temp: 300°C
Maximum Programmed Temp:	280°C	Carrier Gas:	Helium
Maximum Isothermal Temp:	260°C	Hold Up Time Compound:	Methane (1.6 min)

