

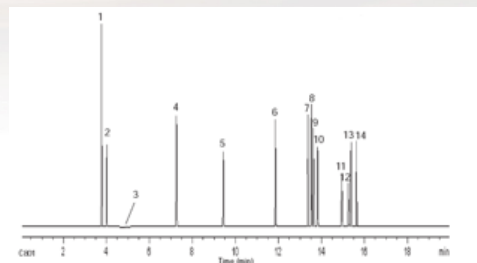
## OV-PLOT Q PLOT Columns

OV-PLOT Q PLOT Columns are used for the analysis of natural gas, refinery gases, chemical weapon gas, CFCs, sulfurs, and amines.

**Features:** Porous Divinylbenzene polymer. Good separations of volatile sulfurs, CO<sub>2</sub>, methane, oxygenate solvent vapors from light hydrocarbon C1 to C4 stream. Separates ethane, ethylene, and acetylene.

**Applications:** Air, Carbon Monoxide, Methane, Carbon Dioxide, Hydrocarbon Gases, Oxygenates, Alcohols, N<sub>2</sub>O, Refinery Gas I, Fatty Acids (Free), Natural Gas, Solvents, Gases (Air, Carbon Monoxide, Methane, Carbon Dioxide), Nitrogen, Oxygen, Argon, Sulfur Gas Analysis of Light Hydrocarbon Streams.

**Similar Phases:** AT-Q, CP-PoraPlot Q, GS-Q, HP-PLOT Q, Rt-Q, Rt-Q-BOND, Rtx-QS, Supel-Q-PLOT



OV Part: Q30-5330  
Column: OV-PLOT Q, 30m x 0.53mm x 30um  
Oven: 60C (2min) 30C/min to 240C (1min)  
Detector: TCD  
Sample: 500ppm H<sub>2</sub>S spike in natural gas standard

Part #	Description
Q10-5330	10 Meter x 0.53 mm ID x 30 um OV-PLOT Q PLOT Column
Q15-2580	15 Meter x 0.25 mm ID x 8 um OV-PLOT Q PLOT Column
Q15-3215	15 Meter x 0.32 mm ID x 15 um OV-PLOT Q PLOT Column
Q15-5330	15 Meter x 0.53 mm ID x 30 um OV-PLOT Q PLOT Column
Q25-5330	25 Meter x 0.53 mm ID x 30 um OV-PLOT Q PLOT Column
Q30-2580	30 Meter x 0.25 mm ID x 8 um OV-PLOT Q PLOT Column
Q30-3215	30 Meter x 0.32 mm ID x 15 um OV-PLOT Q PLOT Column
Q30-5330	30 Meter x 0.53 mm ID x 30 um OV-PLOT Q PLOT Column
Q50-3250	50 Meter x 0.32 mm ID x 5 um OV-PLOT Q PLOT Column
Q50-5310	50 Meter x 0.53 mm ID x 10 um OV-PLOT Q PLOT Column
Q50-5330	50 Meter x 0.53 mm ID x 30 um OV-PLOT Q PLOT Column

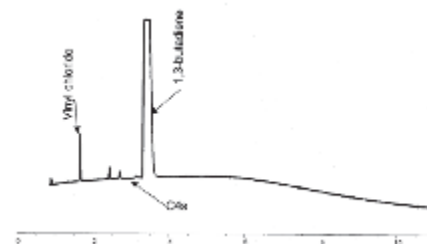
## OV-PLOT U PLOT Columns

OV-PLOT U PLOT Columns are used for the analysis of natural gas, refinery gases, chemical weapon gas, CFCs, sulfurs, and amines.

**Features:** Porous Divinylbenzene, ethylene glycol dimethacrylate co-polymer. Good separations of volatile sulfurs, amines, acids, CO<sub>2</sub>, oxygenate solvent vapors from light hydrocarbon C1 to C4 stream.

**Applications:** Amines in Water, Primary Amines, CO<sub>2</sub> in Air, Moisture, Hydrocarbon Gases, Solvents, N<sub>2</sub>/CO, Sulfurs

**Similar Phases:** CP-PoraPLOT U, CP-PoraBOND U, HP-PLOT U, Rt-U-BOND



OV Part: U30-5320  
Column: OV-PLOT U, 30m x 0.53mm x 20um  
Oven: 100C (5min) 10C/min to 150C (1min)

Part #	Description
U15-3210	15 Meter x 0.32 mm ID x 10 um OV-PLOT U PLOT Column
U15-5320	15 Meter x 0.53 mm ID x 20 um OV-PLOT U PLOT Column
U30-2505	30 Meter x 0.25 mm ID x 5 um OV-PLOT U PLOT Column
U30-3210	30 Meter x 0.32 mm ID x 10 um OV-PLOT U PLOT Column
U30-5320	30 Meter x 0.53 mm ID x 20 um OV-PLOT U PLOT Column

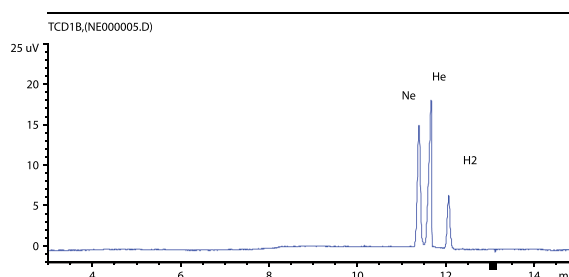
## OV-Molesieve 5A PLOT Columns

OV-Molesieve 5A PLOT Columns are used for the analysis of permanent gases.

**Features:** Separates permanent gases, such as argon, oxygen, nitrogen, carbon monoxide, and methane.

**Applications:** Separates O<sub>2</sub>, N<sub>2</sub>, CO and CH<sub>4</sub> quickly. Use thicker films (25um or 50um) for Argon/Oxygen separations. Use thinner films for routine air monitoring applications.

**Similar Phases:** CP-Molesieve 5A, HP-PLOT Molesieve, Mole Sieve 5A PLOT, Rt-Msieve 5A



OV Part: M50-5350  
 Column: OV-Molesieve 5A, 2 x 50m x 0.53mm x 50um  
 Carrier Gas: Nitrogen

Part #	Description
M05-3212	5 Meter x 0.32 mm ID x 12 um OV-Molesieve 5A PLOT Column
M05-5325	5 Meter x 0.53 mm ID x 25 um OV-Molesieve 5A PLOT Column
M15-3212	15 Meter x 0.32 mm ID x 12 um OV-Molesieve 5A PLOT Column
M15-3225	15 Meter x 0.32 mm ID x 25 um OV-Molesieve 5A PLOT Column
M15-5325	15 Meter x 0.53 mm ID x 25 um OV-Molesieve 5A PLOT Column
M15-5350	15 Meter x 0.53 mm ID x 50 um OV-Molesieve 5A PLOT Column
M30-3212	30 Meter x 0.32 mm ID x 12 um OV-Molesieve 5A PLOT Column
M30-3225	30 Meter x 0.32 mm ID x 25 um OV-Molesieve 5A PLOT Column
M30-5325	30 Meter x 0.53 mm ID x 25 um OV-Molesieve 5A PLOT Column
M30-5350	30 Meter x 0.53 mm ID x 50 um OV-Molesieve 5A PLOT Column
M50-5350	50 Meter x 0.53 mm ID x 50 um OV-Molesieve 5A PLOT Column

## OV-Alumina KCl PLOT Columns

OV-Alumina KCl PLOT Columns are ideal for light hydrocarbons.

**Features:** Immobilized, rinseable with water or methanol, good separation of olefins C<sub>2</sub> to C<sub>5</sub>, least activity for propadiene, significant moisture effect on acetylene/propadiene retention time shifting. Ideal for light hydrocarbons C<sub>1</sub> to C<sub>5</sub> separations, CFCs

**Applications:** C<sub>1</sub>-C<sub>5</sub> Alkanes, Alkenes, Alkynes, Furans, Heptafluoropropanes, Refinery Gases

**Similar Phases:** AB-PLOT Al<sub>2</sub>O<sub>3</sub> KCl, Al<sub>2</sub>O<sub>3</sub>/KCl, Alumina chloride PLOT, AT-Alumina, CP-Al<sub>2</sub>O<sub>3</sub>/KCL-PLOT, HP-PLOT/Al<sub>2</sub>O<sub>3</sub> "KCL", Rt-Alumina PLOT

Part #	Description
K15-3280	15 Meter x 0.32 mm ID x 8 um OV-Alumina, Non-Polar Deactivation PLOT Column
K15-5315	15 Meter x 0.53 mm ID x 15 um OV-Alumina, Non-Polar Deactivation PLOT Column
K25-3280	25 Meter x 0.32 mm ID x 8 um OV-Alumina, Non-Polar Deactivation PLOT Column
K30-3280	30 Meter x 0.32 mm ID x 8 um OV-Alumina, Non-Polar Deactivation PLOT Column
K30-5315	30 Meter x 0.53 mm ID x 15 um OV-Alumina, Non-Polar Deactivation PLOT Column
K50-3280	50 Meter x 0.32 mm ID x 8 um OV-Alumina, Non-Polar Deactivation PLOT Column
K50-5315	50 Meter x 0.53 mm ID x 15 um OV-Alumina, Non-Polar Deactivation PLOT Column
K60-3280	60 Meter x 0.32 mm ID x 8 um OV-Alumina, Non-Polar Deactivation PLOT Column
K60-5315	60 Meter x 0.53 mm ID x 15 um OV-Alumina, Non-Polar Deactivation PLOT Column

## OV-Alumina Na<sub>2</sub>SO<sub>4</sub> PLOT Columns

*OV-Alumina Na<sub>2</sub>SO<sub>4</sub> PLOT Columns are excellent for light hydrocarbon analysis.*

**Features:** Deactivated with sodium sulfate. Immobilized, rinseable with water or methanol. Excellent separations of olefins C<sub>2</sub> to C<sub>5</sub>, slight absorption of propadiene. Low moisture effect on acetylene/propadiene retention time shifting. Ideal column for complete separations of C<sub>1</sub> to C<sub>5</sub> light hydrocarbons, CFCs. Middle range of "polarity" for Alumina phases. Resolves acetylene from butane and propylene from isobutene.

**Applications:** Butadienes, CFCs, C<sub>1</sub>-C<sub>5</sub>, Extended C<sub>1</sub> to C<sub>10</sub>, Ethylene, LPG, MAPP, Natural Gas, Nitrogen Oxides, Propane, Propylene, Refinery Gas.

**Similar Phases:** Al<sub>2</sub>O<sub>3</sub>/Na<sub>2</sub>SO<sub>4</sub>, Alumina PLOT, Alumina sulfate PLOT, AT-Alumina, CP-Al<sub>2</sub>O<sub>3</sub>/Na<sub>2</sub>SO<sub>4</sub>-PLOT, HP-PLOT/Al<sub>2</sub>O<sub>3</sub> "S", Rt-Alumina PLOT, Rt-Alumina BOND/Na<sub>2</sub>SO<sub>4</sub>

Part #	Description
N15-3280	15 Meter x 0.32 mm ID x 8 um OV-Alumina, Polar Deactivation PLOT Column
N15-5315	15 Meter x 0.53 mm ID x 15 um OV-Alumina, Polar Deactivation PLOT Column
N25-3280	25 Meter x 0.32 mm ID x 8 um OV-Alumina, Polar Deactivation PLOT Column
N30-3280	30 Meter x 0.32 mm ID x 8 um OV-Alumina, Polar Deactivation PLOT Column
N30-5315	30 Meter x 0.53 mm ID x 15 um OV-Alumina, Polar Deactivation PLOT Column
N50-3280	50 Meter x 0.32 mm ID x 8 um OV-Alumina, Polar Deactivation PLOT Column
N50-5315	50 Meter x 0.53 mm ID x 15 um OV-Alumina, Polar Deactivation PLOT Column
N60-3280	60 Meter x 0.32 mm ID x 8 um OV-Alumina, Polar Deactivation PLOT Column
N60-5315	60 Meter x 0.53 mm ID x 15 um OV-Alumina, Polar Deactivation PLOT Column

## OV-Alumina "M" PLOT Columns

*OV-Alumina "M" (Na<sub>2</sub>MoO<sub>4</sub>) PLOT Columns are the most polar aluminum oxide phase and are modified by Na<sub>2</sub>MoO<sub>4</sub> salt.*

**Features:** Immobilized, rinseable with water or methanol. Good separations of olefins C<sub>2</sub> to C<sub>5</sub>, less absorption of propadiene. Moderate moisture effect on acetylene/propadiene retention time shifting. Ideal column for complete separations of C<sub>1</sub> to C<sub>5</sub> light hydrocarbons, CFCs. Highest range of "polarity" for Alumina phases. Resolves acetylene from butane and propylene from isobutene.

**Applications:** CFCs, Light Hydrocarbons.

**Similar Phases:** AB-PLOT Al<sub>2</sub>O<sub>3</sub> M, AT-Alumina, BGB-PLOT Al<sub>2</sub>O<sub>3</sub> M, HP-PLOT/Al<sub>2</sub>O<sub>3</sub> "M", GS-Alumina

Part #	Description
NA15-3280	15 Meter x 0.32 mm ID x 8 um OV-Alumina "M", Polar Deactivation PLOT Column
NA15-5315	15 Meter x 0.53 mm ID x 15 um OV-Alumina "M", Polar Deactivation PLOT Column
NA30-3280	30 Meter x 0.32 mm ID x 8 um OV-Alumina "M", Polar Deactivation PLOT Column
NA30-5315	30 Meter x 0.53 mm ID x 15 um OV-Alumina "M", Polar Deactivation PLOT Column
NA50-3280	50 Meter x 0.32 mm ID x 8 um OV-Alumina "M", Polar Deactivation PLOT Column
NA50-5315	50 Meter x 0.53 mm ID x 15 um OV-Alumina "M", Polar Deactivation PLOT Column
NA60-5315	60 Meter x 0.53 mm ID x 15 um OV-Alumina "M", Polar Deactivation PLOT Column

## OV-PLOT GasPro PLOT Columns

OV PLOT GasPro PLOT Columns are used for the analysis of sulfur analysis, CFCs, light hydrocarbons, and solvents.

**Features:** Proprietary porous silica layer. Immobilized, rinseable with methanol, acetone, and pentane. High plate numbers. Good separations of volatile sulfurs, CO<sub>2</sub>, solvents, and light hydrocarbons C1 to C5. Separates CO and Co<sub>2</sub> on a single column.

**Applications:** C1 and C2 Halocarbons (Freon), Halothane, Residue Solvents, Extended Hydrocarbon Analysis, Inorganic Gases, Sulfur Compounds in Propylene (1 ppm), Halocarbons, Mercaptans, Sulfur Gas Analysis in Light Hydrocarbon Streams, Method ASTM D 2505, Method ASTM D 5303

**Similar Phases:** CP-Silica PLOT, GS-GasPro

Part #	Description
GP05-3250	5 Meter x 0.32 mm ID x 5 um OV-PLOT GasPro PLOT Column
GP15-3250	15 Meter x 0.32 mm ID x 5 um OV-PLOT GasPro PLOT Column
GP30-3250	30 Meter x 0.32 mm ID x 5 um OV-PLOT GasPro PLOT Column
GP60-3250	60 Meter x 0.32 mm ID x 5 um OV-PLOT GasPro PLOT Column

## Inlet Seals for Agilent 7890/6890/6850 GC Systems

OV Part Number	Description	Unit
4300	0.8mm Inlet Seal, Gold-plated For Agilent Systems, Splitless, with Gold-plated Washers	2/pk
4300-10	0.8mm Inlet Seal, Gold-plated For Agilent Systems, Splitless, with Gold-plated Washers	10/pk
4350	0.8mm Inlet Seal, Stainless Steel For Agilent Systems, Splitless, with SS Washers	2/pk
4350-10	0.8mm Inlet Seal, Stainless Steel For Agilent Systems, Splitless, with SS Washers	10/pk
4400	0.8mm Inlet Seal, Gold-plated For Agilent Systems, Split Double Groove (Cross), with Gold-plated Washers	2/pk
4400-10	0.8mm Inlet Seal, Gold-plated For Agilent Systems, Split Double Groove (Cross), with Gold-plated Washers	10/pk
4450	0.8mm Inlet Seal, Stainless Steel For Agilent Systems, Split Double Groove (Cross), with SS Washers	2/pk
4450-10	0.8mm Inlet Seal, Stainless Steel For Agilent Systems, Split Double Groove (Cross), with SS Washers	10/pk
4800	Replacement Gold-plated Washers for Inlet Seal	12/pk
4850	Replacement Stainless Steel Washers for Inlet Seal	12/pk



**Address:** 115 Industry Road  
Marietta, Ohio 45750

**Toll-free Phone:** 1-800-729-6872  
**Phone:** 1-740-373-2276  
**Fax:** 1-740-373-9910

<https://ovsc.com/>



Rev: 3/2019